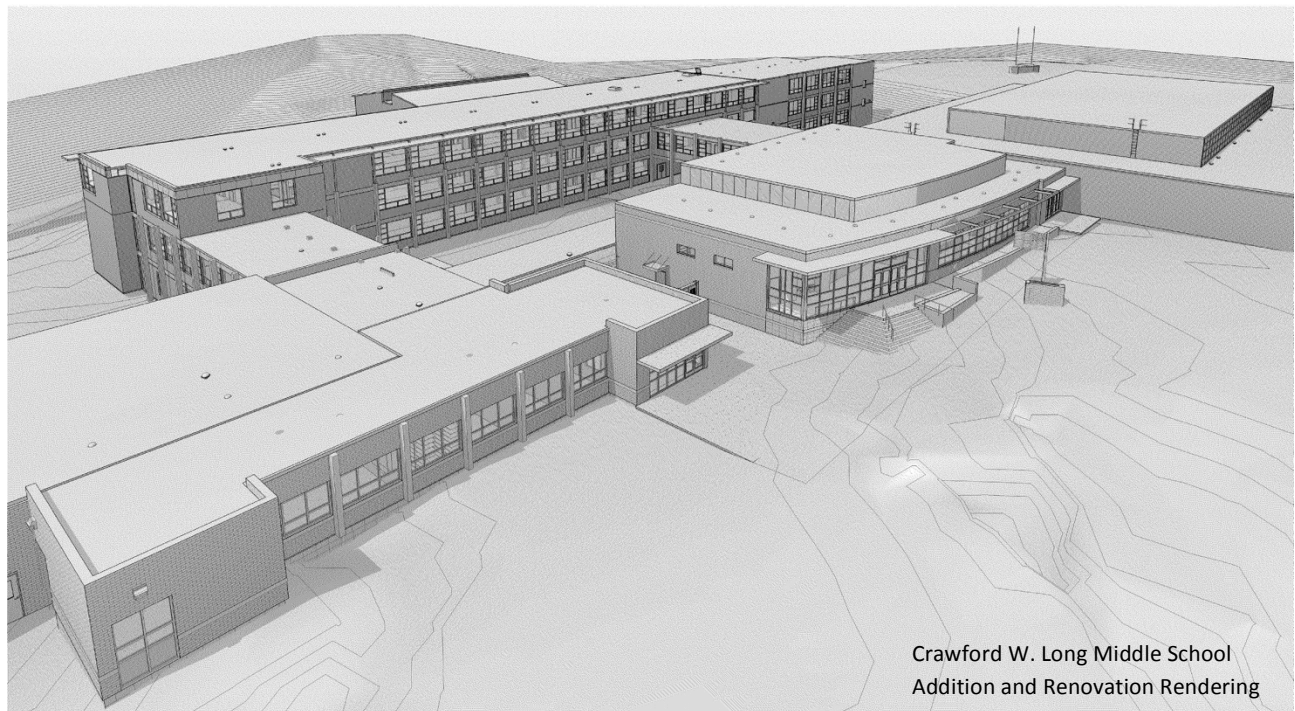




## PRESS RELEASE



### **Winter Construction Awarded Its 13th Project for Atlanta Public Schools**

(February 13, 2015) ATLANTA, GA - Winter Construction has been awarded its 13<sup>th</sup> project in ten years for Atlanta Public Schools. The latest collaboration between Atlanta Public Schools and Winter is a renovation and addition to Crawford W. Long Middle School, located in southeast Atlanta.

The most exciting component of Winter's project at Long Middle School is the construction of a new auditorium building. This new 300-seat space will greatly improve the school's performance and presentation capability.

Winter's modifications to the school's classroom space include building a three-story addition to the existing classroom wing. Students and staff will also notice a significant improvement to the existing gymnasium which will be expanded by over 14,000 square feet.

Winter will also build an addition to the administrative offices, and renovate a portion of the existing space. The total square footage of transformed administrative space will amount to over 8,000 square feet.

Long Middle School will remain occupied during construction, and is expected to be complete in the Fall of 2016. BRPH Architects is the architect of record on the project.

###

*About Winter Construction:*

*Founded in 1962, Winter Construction is a privately owned and operated Atlanta based multidisciplinary general contracting company. We provide construction and environmental services to clients in the hospitality, retail, government, education, corporate/office, religious, senior living, and multifamily markets in the Southeast. For more information visit: <http://www.wintercompanies.com>*

Media Contact:

Giffney Nagel, Marketing Director, Winter Construction, 404-993-4574

#####