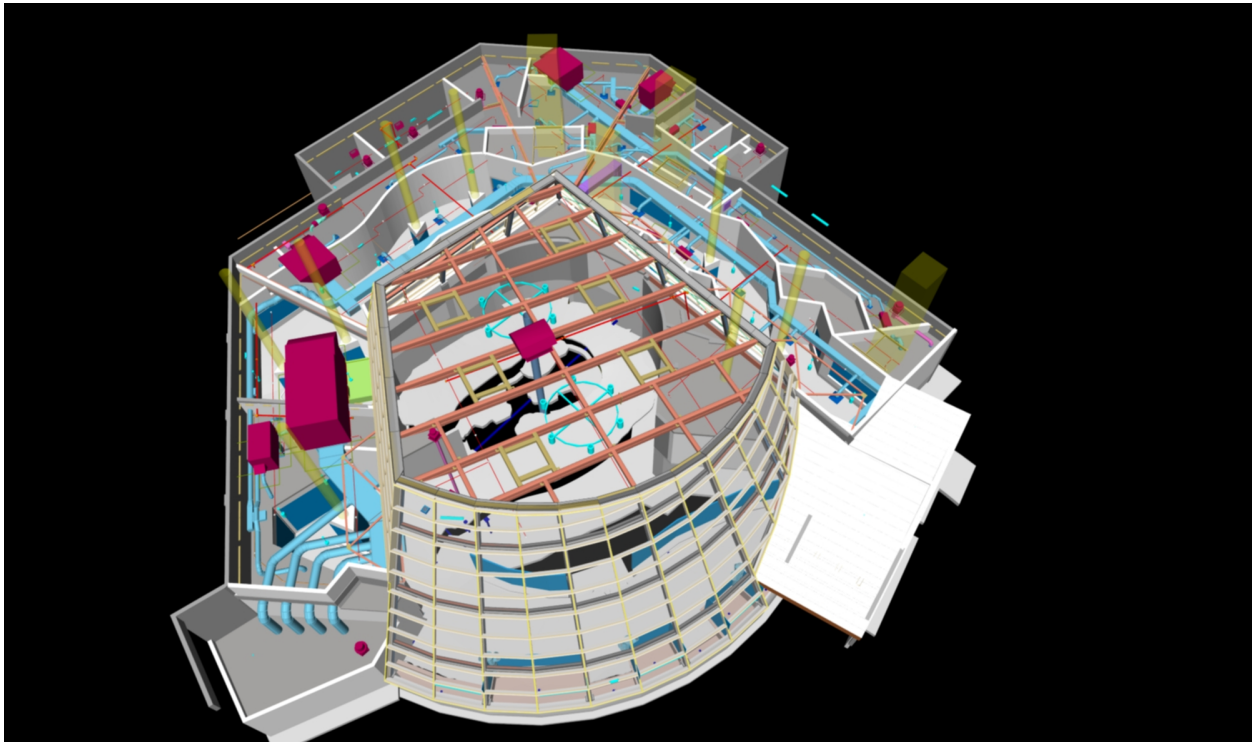




ATLANTA (April 26, 2014)

Winter Johnson Group Maximizes Budget and Schedule Using Building Information Modeling in Zoo Atlanta Reptile & Amphibian Complex Project



Throughout the 11 months of construction on the Zoo Atlanta Reptile & Amphibian Complex, Winter Johnson Group has been able to maximize the schedule and budget by using building information software, also known as BIM to detect clashes and conflicts in the plans for the facility, which boasts complex architectural design and construction features.

This project will mark Winter Johnson Group's first internal, comprehensive use of BIM for project delivery and has proven valuable to all involved in the project team from architects to subcontractors.

"When we first looked at the drawings and saw the oddly shaped and expansive glass enclosure in the design along with the other unique features of the facility, we suspected there could potentially be some clashes between architectural, structural and mechanical elements," stated Andy Rogers, VP of Preconstruction.

Coordinating all the major elements in a construction project is traditionally done on paper and includes separate multiple overlays for coordination of mechanical and structural specifications. Additionally, multiple design iterations can result in a higher margin for error when aligning and synchronizing the plan overlays.

Typically during construction it is necessary for field teams to perform extensive and time-consuming layouts and field measurements to assure accurate fit and system compatibility. Before BIM, there were often clashes between design intent and field conditions and conflicts between building systems and structure. Resolving these conflicts sometimes required substantial redesign or in some cases, demolition and reinstallation.

Specifically, the team has leveraged BIM to assure the structural steel frame will fit within the building's complex glass enclosure. Conflicts were also detected between the numerous skylight openings, featured in the main atrium ceiling of the exhibit, and mechanical ductwork, which would have obstructed the skylights. We were able to collaborate with the architects to modify and make adjustments in preconstruction rather than being surprised in the field. The glass panels are a substantial portion of the project budget and had to be pre-ordered long before field measurements could be taken. The smallest error would have resulted in costly resupply and delays in the project schedule due to material.

Not only does BIM software help avoid field surprises and delays, its comprehensive and complex 3D rendering of design documents provides the Owners and project team with a better understanding of the nature of their work.

Winter Johnson Group, a joint venture, is comprised of Winter Construction, a privately owned and operated Atlanta-based construction management and general contracting company and Johnson Construction Services, a minority-owned contracting company in Atlanta. Winter Johnson group provides construction and environmental services to clients in the hospitality, retail, government, education, corporate/office, religious, healthcare, historic restoration, industrial and multifamily markets in the Southeast and Mid-Atlantic. For more information visit www.winterjohnsongroup.com

Media Contact:

Giffney Nagel, Marketing Director, Winter Construction, 404-965-3369